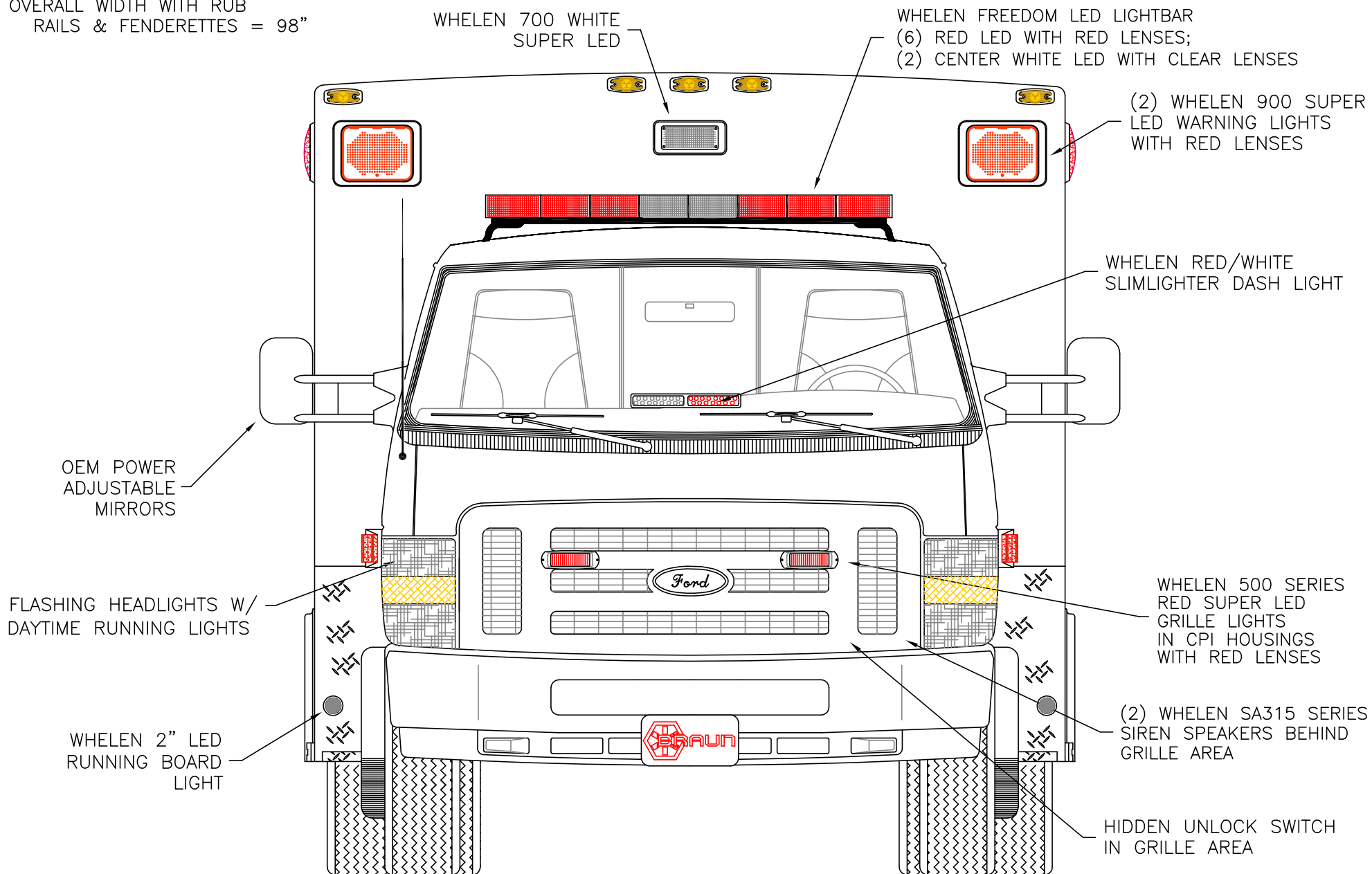


DIMENSIONS FOR OVERALL HEIGHT AND LENGTH ARE APPROXIMATE
 OVERALL HEIGHT = 106.5"
 OVERALL WIDTH WITH RUB
 RAILS & FENDERETTES = 98"



THIS DRAWING IS FOR REPRESENTATIONAL PURPOSES ONLY. DETAILS ARE CONCEPTUAL AND ARE SUBJECT TO CHANGE DURING DESIGN AND CONSTRUCTION
 DIMENSIONS ARE APPROXIMATE UNLESS NOTED OTHERWISE TO MEET A SPECIFIC CUSTOMER NEED.

ALL AREA
 DEMO



2014 FRONT EXTERIOR VIEW
 CHIEF XL-III/FORD E-450 CHASSIS-GAS ENGINE

1:17

DATE:
 09 JULY 13
 DWG. GLF
 REV. NR

DRAWING NO.
 ALL AREA-1

DIMENSIONS FOR OVERALL HEIGHT AND LENGTH ARE APPROXIMATE
 OVERALL HEIGHT = 106.5"
 OVERALL WIDTH WITH RUB
 RAILS & FENDERETTES = 98"
 FLOOR HEIGHT = 33"

12" FROSTED STAR-OF-LIFE
 ON EACH WINDOW

LOCATION FOR
 DOOR GRABBERS

LED LICENSE
 PLATE LIGHT

MUD FLAPS

(1) WHELEN 600 AMBER SUPER LED WITH AMBER LENS

ALLOW ROOM FOR POSSIBLE FUTURE
 INSTALL OF TRAFFIC ADVISOR.
 (FOR REFERENCE, WHELEN TAL85 PROFILE SHOWN)

(2) WHELEN 600 CLEAR HALOGEN LOAD LIGHTS

(2) WHELEN 900 RED
 SUPER LED WITH
 RED LENSES

REAR VIEW CAMERA

(2) WHELEN 900 BLUE
 SUPER LED WITH
 BLUE LENSES

(1) EACH SIDE, WHELEN
 600 LED BRAKE/TAI,
 600 LED TURN
 600 HALOGEN BACK-UP
 NOTE: MOUNT OUTBOARD AS
 FAR AS PRACTICAL

INDEPENDENT BUMPER WITH
 NON-SKID FLIP-UP CENTER
 STEP AND COT PROTECTOR
 ON STEP EDGE. TOW HOOKS
 LOCATED BELOW STEP/BUMPER.

THIS DRAWING IS FOR REPRESENTATIONAL PURPOSES ONLY. DETAILS ARE CONCEPTUAL AND ARE SUBJECT TO CHANGE DURING DESIGN AND CONSTRUCTION
 DIMENSIONS ARE APPROXIMATE UNLESS NOTED OTHERWISE TO MEET A SPECIFIC CUSTOMER NEED.

ALL AREA
 DEMO



2014 REAR EXTERIOR VIEW
 CHIEF XL-III/FORD E-450 CHASSIS

DATE:
 09 JULY 13
 DWG. GLF
 REV. NR

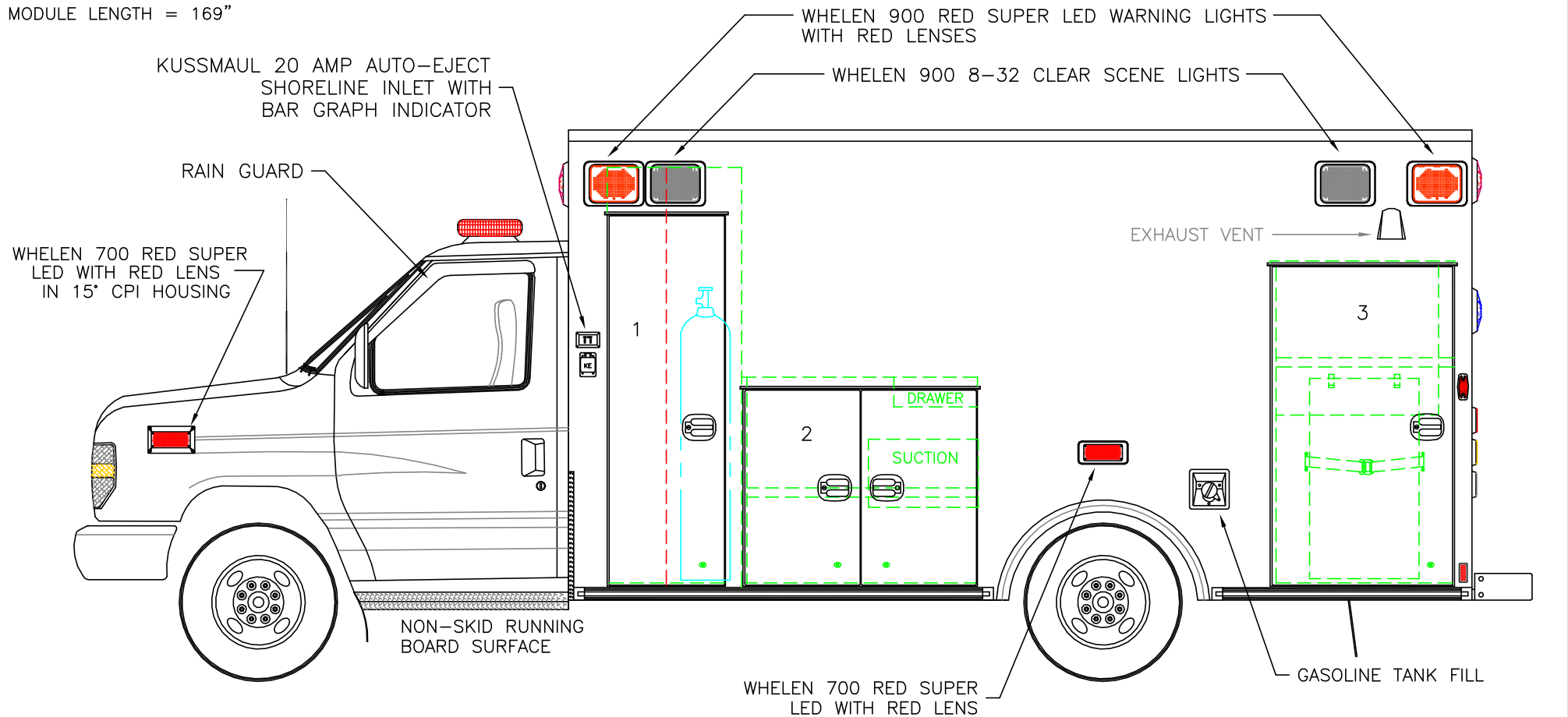
DRAWING NO.
 ALL AREA-2

DIMENSIONS FOR OVERALL HEIGHT AND LENGTH ARE APPROXIMATE

OVERALL HEIGHT = 106.5"

OVERALL LENGTH = 272.75"

MODULE LENGTH = 169"



COMPARTMENT

O.S.S #1

CLEAR OPENING: 68.00h x 18.25w
INSIDE DIM'S.: 77.75h x 24.25w x 20.75d
VERTICAL CENTER DIVIDER
BACKBOARD/SCOOP STORAGE - FORWARD
OXYGEN STORAGE - REARWARD

O.S.S #2

CLEAR OPENING: 35.50h x 38.50w
INSIDE DIM'S.: 38.50h x 43.00w x 20.75d
(1) ADJUSTABLE SHELF

O.S.S #3

CLEAR OPENING: 58.50h x 30.75w
INSIDE DIM'S.: 60.25h x 33.25w x 20.75d
INSIDE/OUTSIDE ACCESS
(1) ADJUSTABLE SHELF
J-HOOKS/STRAP ON INSIDE OF DOOR FOR STAIR CHAIR STORAGE

COMPARTMENTS TO HAVE TECNIQ LED STRIP LIGHTS

• = RED MINI-LED LIGHT ON BOTTOM INSIDE CORNER OF EACH COMPARTMENT DOOR
(TOTAL OF [4] THIS SIDE OF MODULE)

THIS DRAWING IS FOR REPRESENTATIONAL PURPOSES ONLY. DETAILS ARE CONCEPTUAL AND ARE SUBJECT TO CHANGE DURING DESIGN AND CONSTRUCTION
DIMENSIONS ARE APPROXIMATE UNLESS NOTED OTHERWISE TO MEET A SPECIFIC CUSTOMER NEED.

ALL AREA
DEMO



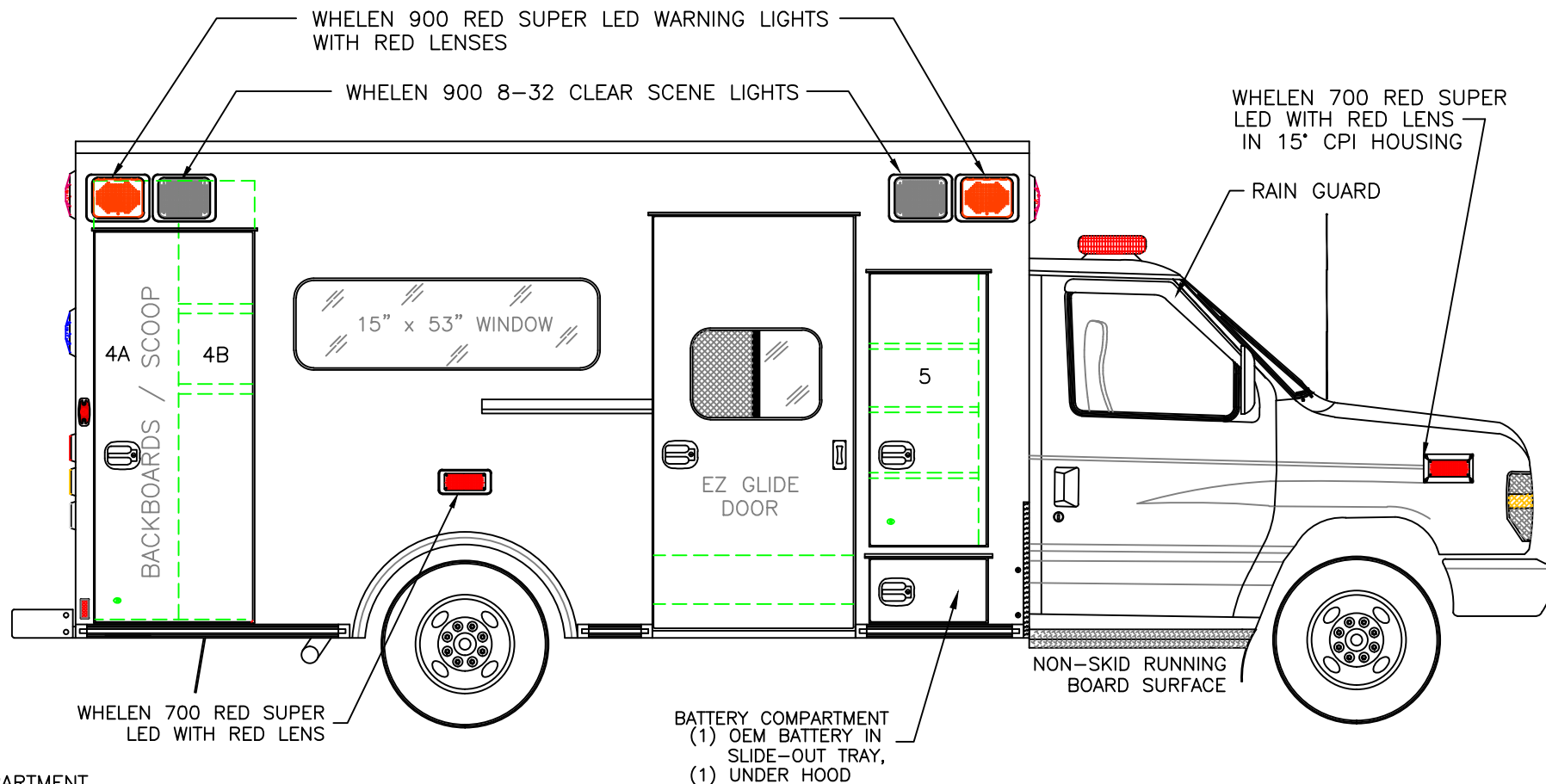
2014 STREETSIDE EXTERIOR VIEW
CHIEF XL-III/FORD E-450 CHASSIS

1:28

DATE:
09 JULY 13
DWG.
GLF
REV.
NR

DRAWING NO.
ALL AREA-3

DIMENSIONS FOR OVERALL HEIGHT AND LENGTH ARE APPROXIMATE
 OVERALL HEIGHT = 106.5"
 OVERALL LENGTH = 272.75"
 MODULE LENGTH = 169"



COMPARTMENT
 O.S.S #4

CLEAR OPENING: 68.00h x 24.75w
 INSIDE DIM'S. 4A: 77.75h x 15.00w x 20.75d
 BACKBOARD/SCOOP STORAGE

INSIDE DIM'S. 4B: 77.75h x 13.50w x 20.75d
 (2) ADJUSTABLE SHELVES WITH INSIDE/OUTSIDE ACCESS

O.S.S #5

CLEAR OPENING: 46.75h x 17.25w
 INSIDE DIM'S. 5: SEE PARTITION INTERIOR VIEW
 INSIDE/OUTSIDE ACCESS WITH (3) ADJUSTABLE SHELVES

COMPARTMENTS TO HAVE TECNIQ LED STRIP LIGHTS

• = RED MINI-LED LIGHT ON BOTTOM INSIDE CORNER OF #4 & #5 COMPARTMENT DOORS

THIS DRAWING IS FOR REPRESENTATIONAL PURPOSES ONLY. DETAILS ARE CONCEPTUAL AND ARE SUBJECT TO CHANGE DURING DESIGN AND CONSTRUCTION
 DIMENSIONS ARE APPROXIMATE UNLESS NOTED OTHERWISE TO MEET A SPECIFIC CUSTOMER NEED.

ALL AREA
 DEMO



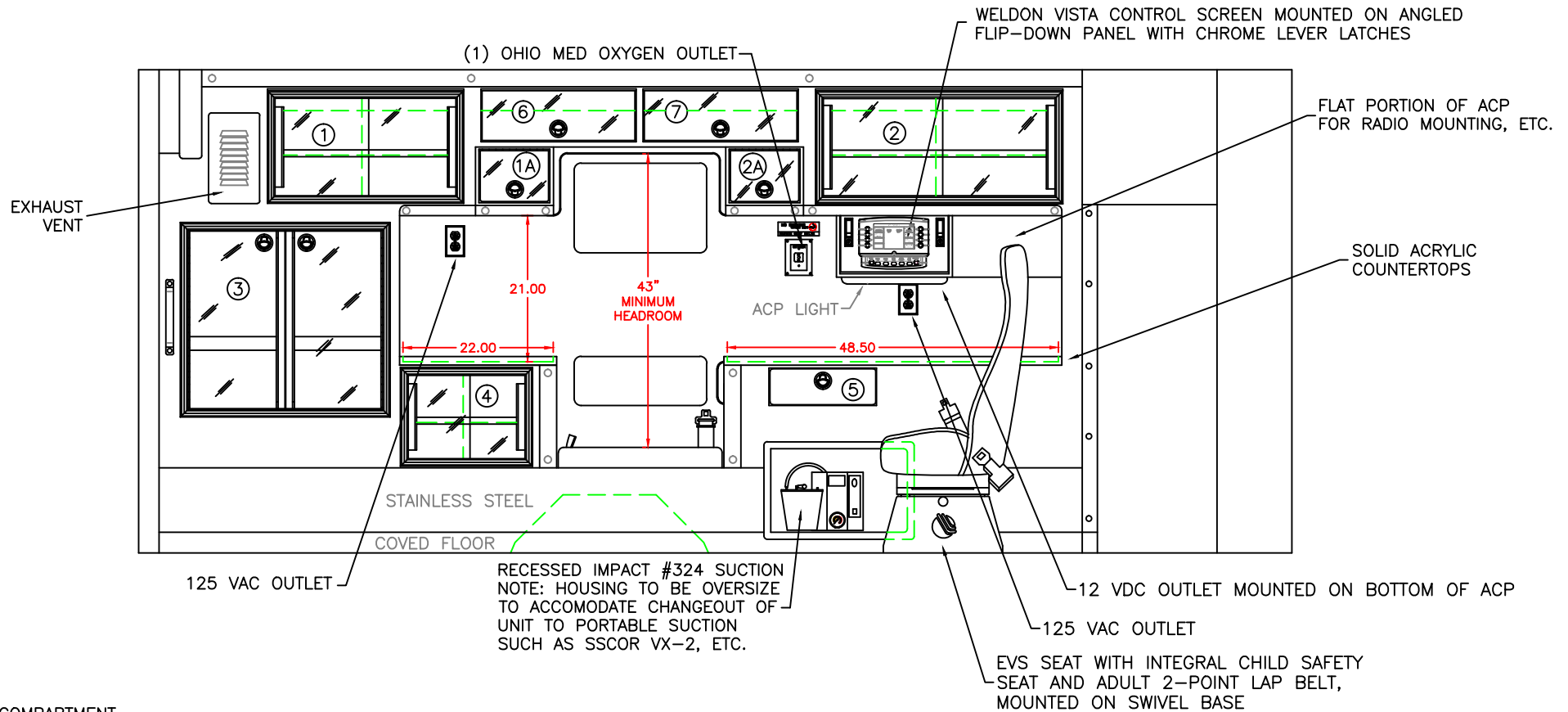
2014 CURBSIDE EXTERIOR VIEW
 CHIEF XL-III/FORD E-450 CHASSIS

1:28

DATE:	05 DEC 13	
DWG.	AAB	REV. C

DRAWING NO.	ALL AREA-4
-------------	------------

COMPARTMENTS #1 & #2 HAVE LIFT-UP RESTOCKING FRAMES



COMPARTMENT

#1 DOOR OPENING: 14.25h x 26.50w
 INSIDE DIMS: 16.75h x 28.50w x 17.25d
 (1) ADJUSTABLE SHELF
 SLIDING ACRYLIC CABINET DOORS

#2 DOOR OPENING: 14.25h x 34.00w
 INSIDE DIMS: 16.75h x 36.00w x 17.25d
 (1) ADJUSTABLE SHELF
 SLIDING ACRYLIC CABINET DOORS

#1A & #2A ANGLED-FACE CABINETS WITH LIFT-UP DOORS
 LOCKING STAINLESS STEEL FLUSH PULL LATCHES
 OPENING DIMS: 7.75h x 12.00w
 EACH DOOR TO BE SMOKED ACRYLIC

#3 DOOR OPENING: 26.25h x 28.50w
 INSIDE DIMS: O.S.S. #3
 RECESSED .375" ACRYLIC DOORS WITH FULL LENGTH HANDLES
 LOCKING STAINLESS STEEL FLUSH PULL LATCHES

#4 DOOR OPENING: 12.00h x 17.00w
 INSIDE DIMS: 14.00h x 20.00w x 16.25d
 (1) ADJUSTABLE SHELF

#5 PULL-OUT DRAWER WITH HINGED ACRYLIC WRITING SURFACE
 INSIDE DIMS: 4.50h x 14.50w x 13.25d
 LOCKING STAINLESS STEEL FLUSH PULL LATCH

#6 & #7 DOOR OPENINGS: 7.75h x 22.75w
 INSIDE DIMS: 7.75h x 22.75w x 17.25d
 LIFT-UP SMOKED ACRYLIC DOORS
 LOCKING STAINLESS STEEL FLUSH PULL LATCHES

CABINETS TO BE ALUMINUM
 CABINETS TO HAVE LED LIGHTING
 CABINET SHELF TRACK TO BE RECESSED
 MINIMIZE EXPOSED FASTENERS

THIS DRAWING IS FOR REPRESENTATIONAL PURPOSES ONLY. DETAILS ARE CONCEPTUAL AND ARE SUBJECT TO CHANGE DURING DESIGN AND CONSTRUCTION
 DIMENSIONS ARE APPROXIMATE UNLESS NOTED OTHERWISE TO MEET A SPECIFIC CUSTOMER NEED.

ALL AREA
 DEMO



2014 STREETSIDE INTERIOR VIEW
 CHIEF XL-III

1:22

DATE:
 05 DEC 13
 DWG. AAB REV. B

DRAWING NO.
 ALL AREA-5

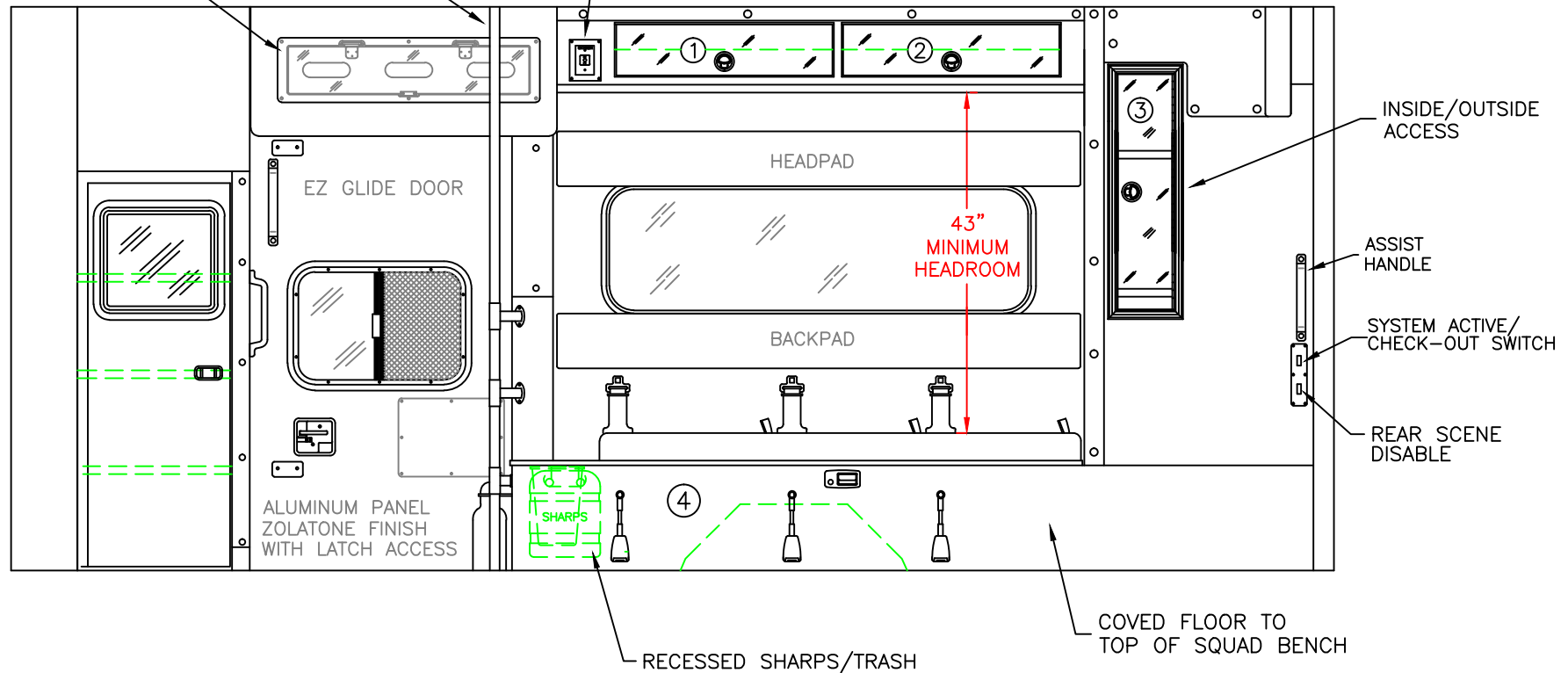
STAINLESS STEEL BENNINGTON BAR

(1) VERTICAL BAR TO ALLOW ACCESS TO GLOVE STORAGE

(2) HORIZONTAL FIXED BARS WITH PADDING

3-GLOVE BOX HOLDER

OHIO MED OXYGEN OUTLET



COMPARTMENT

#1, #2 CABINET

DOOR OPENINGS: 6.25h x 28.00w

INSIDE DIMS: 6.25h x 28.00w x 11.00d

LIFT-UP ACRYLIC DOORS

LOCKING STAINLESS STEEL FLUSH PULL LATCHES

#3 DOOR OPENING: 30.00h x 7.25w

INSIDE DIMS: OSS #4B

RECESSED .375" ACRYLIC DOOR

(1) LOCKING STAINLESS STEEL FLUSH PULL LATCH

#4 INSIDE DIM'S: 14.25h x 72.00w x 21.00d

CABINETS TO BE ALUMINUM

CABINETS TO HAVE LED LIGHTING

CABINET SHELF TRACK TO BE RECESSED

MINIMIZE EXPOSED FASTENERS

THIS DRAWING IS FOR REPRESENTATIONAL PURPOSES ONLY. DETAILS ARE CONCEPTUAL AND ARE SUBJECT TO CHANGE DURING DESIGN AND CONSTRUCTION
DIMENSIONS ARE APPROXIMATE UNLESS NOTED OTHERWISE TO MEET A SPECIFIC CUSTOMER NEED.

ALL AREA
DEMO

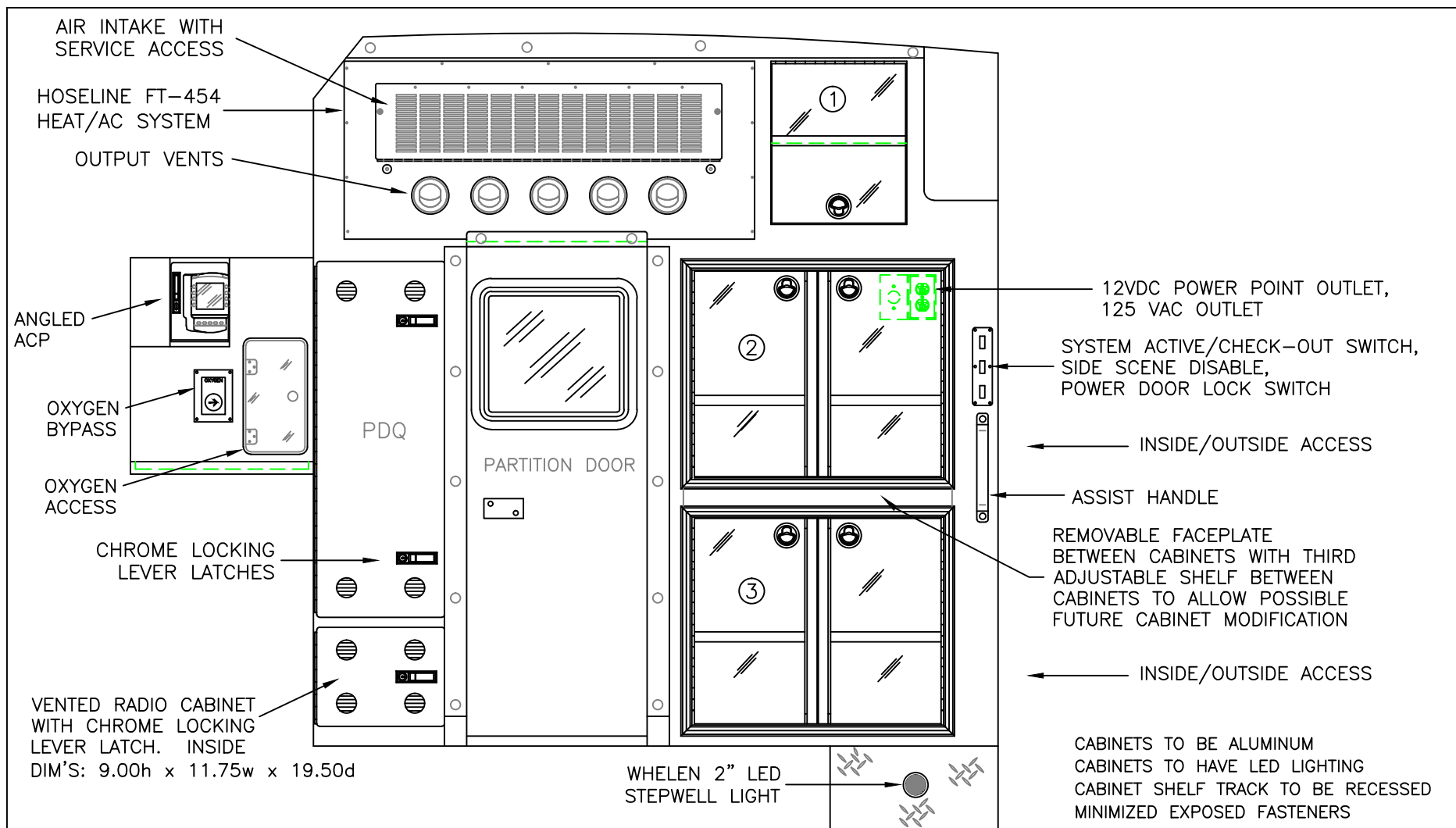


2014 CURBSIDE INTERIOR VIEW
CHIEF XL-III

1:20

DATE:
05 DEC 13
DWG. AAB
REV. B

DRAWING NO.
ALL AREA-6



COMPARTMENT

#1 DOOR OPENING: 16.50h x 13.75w
 INSIDE DIMS: 16.50h x 13.75w x 19.00d
 LIFT UP ACRYLIC DOOR WITH HOLD-OPEN
 (1) ADJUSTABLE SHELF
 LOCKING STAINLESS STEEL FLUSH PULL LATCH

#2 & #3 DOOR OPENINGS: 21.00h x 25.25w
 INSIDE DIMS: 24.75h x 31.50w x 20.75d
 RECESSED .375" ACRYLIC DOORS WITH FULL LENGTH HANDLES
 LOCKING STAINLESS STEEL FLUSH PULL LATCHES
 (1) ADJUSTABLE SHELF PER COMPARTMENT
 (1) ADJUSTABLE SHELF BETWEEN COMPARTMENTS FOR A TOTAL OF (3) SHELVES
 REMOVABLE FACEPLATE BETWEEN #2 & #3 COMPARTMENTS
 FOR POSSIBLE FUTURE CHANGE TO FULL-HEIGHT DOORS

THIS DRAWING IS FOR REPRESENTATIONAL PURPOSES ONLY. DETAILS ARE CONCEPTUAL AND ARE SUBJECT TO CHANGE DURING DESIGN AND CONSTRUCTION
 DIMENSIONS ARE APPROXIMATE UNLESS NOTED OTHERWISE TO MEET A SPECIFIC CUSTOMER NEED.

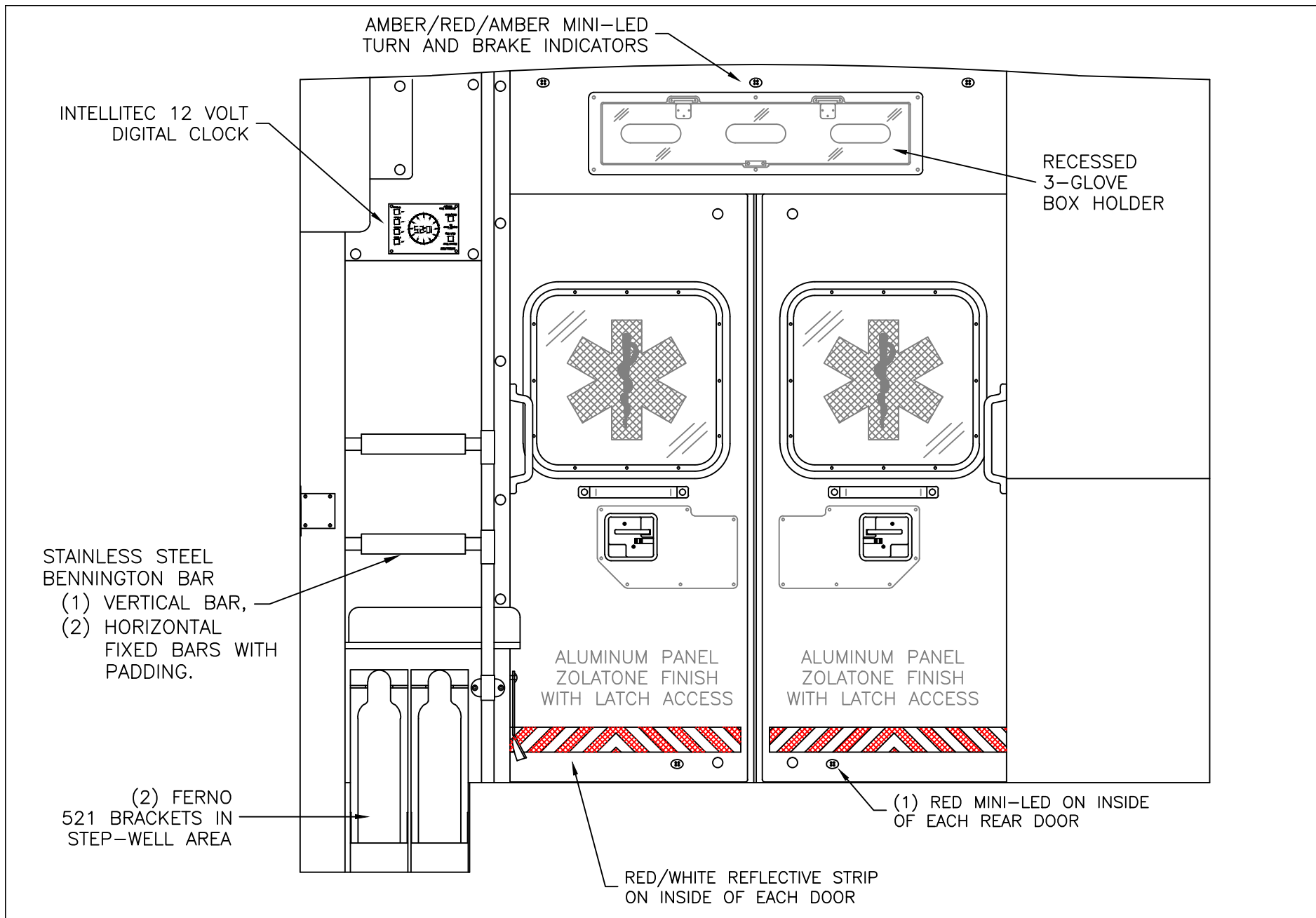
ALL AREA
DEMO



2014 PARTITION INTERIOR VIEW
CHIEF XL-III

DATE: 05 DEC 13	
DWG. AAB	REV. B

DRAWING NO.
ALL AREA-7



THIS DRAWING IS FOR REPRESENTATIONAL PURPOSES ONLY. DETAILS ARE CONCEPTUAL AND ARE SUBJECT TO CHANGE DURING DESIGN AND CONSTRUCTION
DIMENSIONS ARE APPROXIMATE UNLESS NOTED OTHERWISE TO MEET A SPECIFIC CUSTOMER NEED.

ALL AREA
DEMO

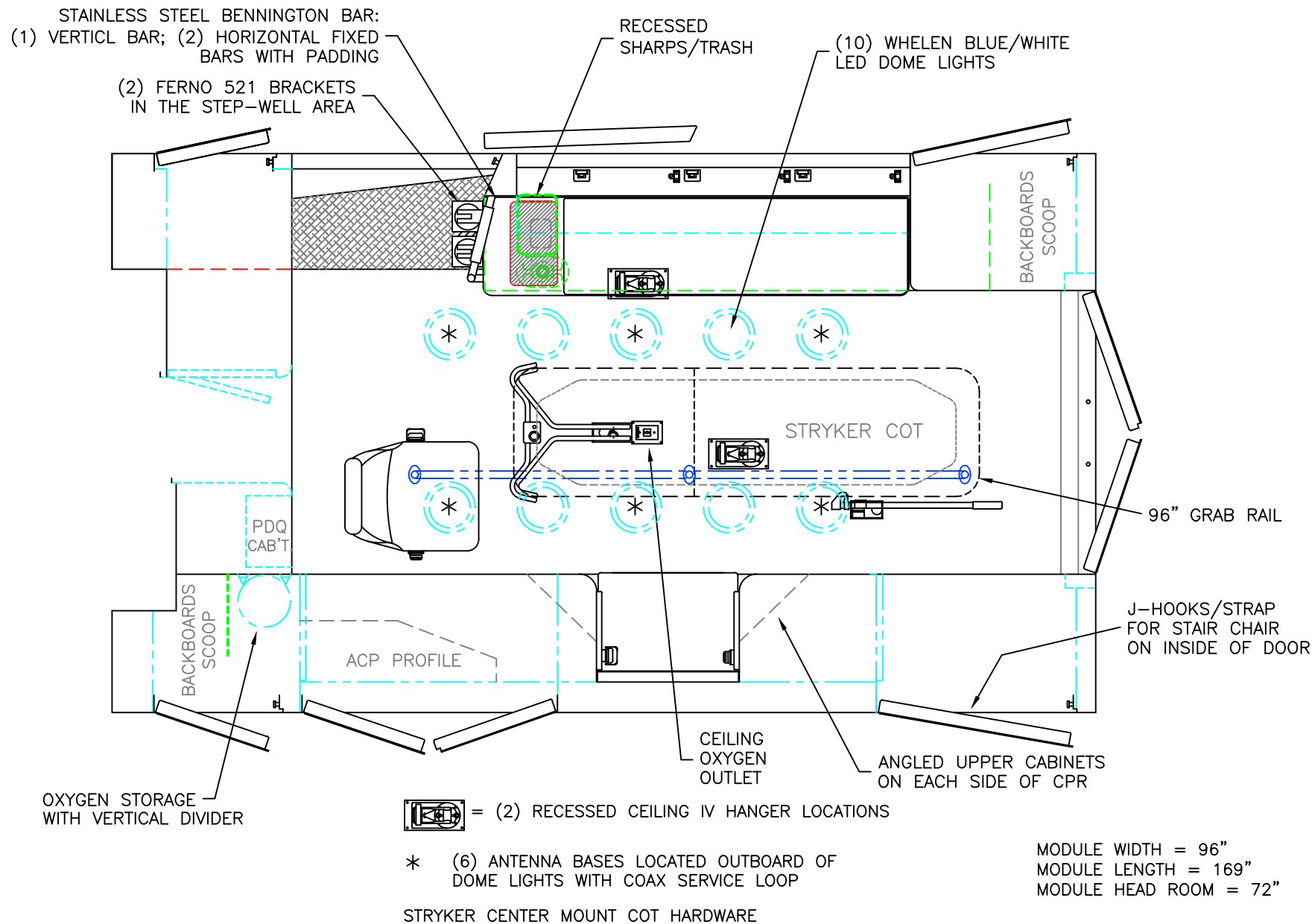


2014 REAR INTERIOR VIEW
CHIEF XL-III

1:12

DATE:
05 DEC 13
DWG. AAB REV. B

DRAWING NO.
ALL AREA-8



THIS DRAWING IS FOR REPRESENTATIONAL PURPOSES ONLY. DETAILS ARE CONCEPTUAL AND ARE SUBJECT TO CHANGE DURING DESIGN AND CONSTRUCTION
DIMENSIONS ARE APPROXIMATE UNLESS NOTED OTHERWISE TO MEET A SPECIFIC CUSTOMER NEED.

ALL AREA
DEMO



2014 FLOOR INTERIOR VIEW
CHIEF XL-III

1:22

DATE:	05 DEC 13
DWG.	AAB
REV.	B

DRAWING NO.
ALL AREA-9