

DIMENSIONS FOR OVERALL HEIGHT AND LENGTH ARE APPROXIMATE
 OVERALL HEIGHT = 102.5"
 OVERALL WIDTH WITH RUB
 RAILS & FENDERETTES = 95"

(5) TECNIQ S330 AMBER
 MINI-LED MARKER LIGHTS

(7) WHELEN 600 SUPER LED WITH CLEAR LENSES
 RED / RED / RED / WHITE / RED / RED / RED

VELVAC 2020XG
 HEATED/REMOTE
 MIRRORS

FLASHING HEADLIGHTS W/
 DAYTIME RUNNING LIGHTS

NOTE:
 THIS DRAWING REPRESENTS
 THE STANDARD LAYOUT
 FOR THIS MODEL.

WHELEN 700 SERIES
 RED SUPER LED
 GRILLE LIGHTS
 W/ CLEAR LENSES

CAST PRODUCTS
 SAD/SAP 4316
 SIREN SPEAKERS

HIDDEN UNLOCK SWITCH
 IN GRILLE AREA

THIS DRAWING IS FOR REPRESENTATIONAL PURPOSES ONLY. DETAILS ARE CONCEPTUAL AND ARE SUBJECT TO CHANGE DURING DESIGN AND CONSTRUCTION
 DIMENSIONS ARE APPROXIMATE UNLESS NOTED OTHERWISE TO MEET A SPECIFIC CUSTOMER NEED.



2013 FRONT EXTERIOR VIEW
 SIGNATURE SERIES / CHEVY G3500 CHASSIS

1:16

DATE: 26 OCT 12	
DWG. AAB	REV. NR

DRAWING NO. SS-G3500-1

DIMENSIONS FOR OVERALL HEIGHT AND LENGTH ARE APPROXIMATE
 OVERALL HEIGHT = 102.5"
 OVERALL WIDTH WITH RUB
 RAILS & FENDERETTES = 95"
 FLOOR HEIGHT = 32.5"

(5) WHELEN 600 SUPER LED WARNING LIGHTS,
 (2) WHELEN 600 CLEAR HALOGEN LOAD LIGHTS:
 RED / RED / LOAD / AMBER / LOAD / RED / RED
 ALL WITH CLEAR LENSES

(5) TECNIQ S330 RED
 MINI-LED MARKER LIGHTS

(2) WHELEN 600 RED
 SUPER LED LIGHTS
 WITH CLEAR LENSES

CAST PRODUCTS
 DOOR GRABBERS

LED LICENSE
 PLATE LIGHT

MUD FLAPS

ONE (1) EACH SIDE
 WHELEN
 600 LED BRAKE/TAIL,
 600 LED TURN,
 600 HALOGEN BACK-UP
 LIGHTS AS FAR OUTBOARD
 AS POSSIBLE.

NOTE:
 THIS DRAWING REPRESENTS
 THE STANDARD LAYOUT
 FOR THIS MODEL.

INDEPENDENT BUMPER WITH
 NON-SKID FLIP-UP CENTER
 STEP AND COT PROTECTOR
 ON STEP EDGE.

COT PROTECTOR
 ON STEP EDGE

THIS DRAWING IS FOR REPRESENTATIONAL PURPOSES ONLY. DETAILS ARE CONCEPTUAL AND ARE SUBJECT TO CHANGE DURING DESIGN AND CONSTRUCTION
 DIMENSIONS ARE APPROXIMATE UNLESS NOTED OTHERWISE TO MEET A SPECIFIC CUSTOMER NEED.



2013 REAR EXTERIOR VIEW
 SIGNATURE SERIES

1:16

DATE:	29 OCT 12
DWG.	REV.
AAB	NR

DRAWING NO.
SS-G3500-2

DIMENSIONS FOR OVERALL HEIGHT AND LENGTH ARE APPROXIMATE

OVERALL HEIGHT = 102.5"

OVERALL LENGTH = 260"

MODULE LENGTH = 150"

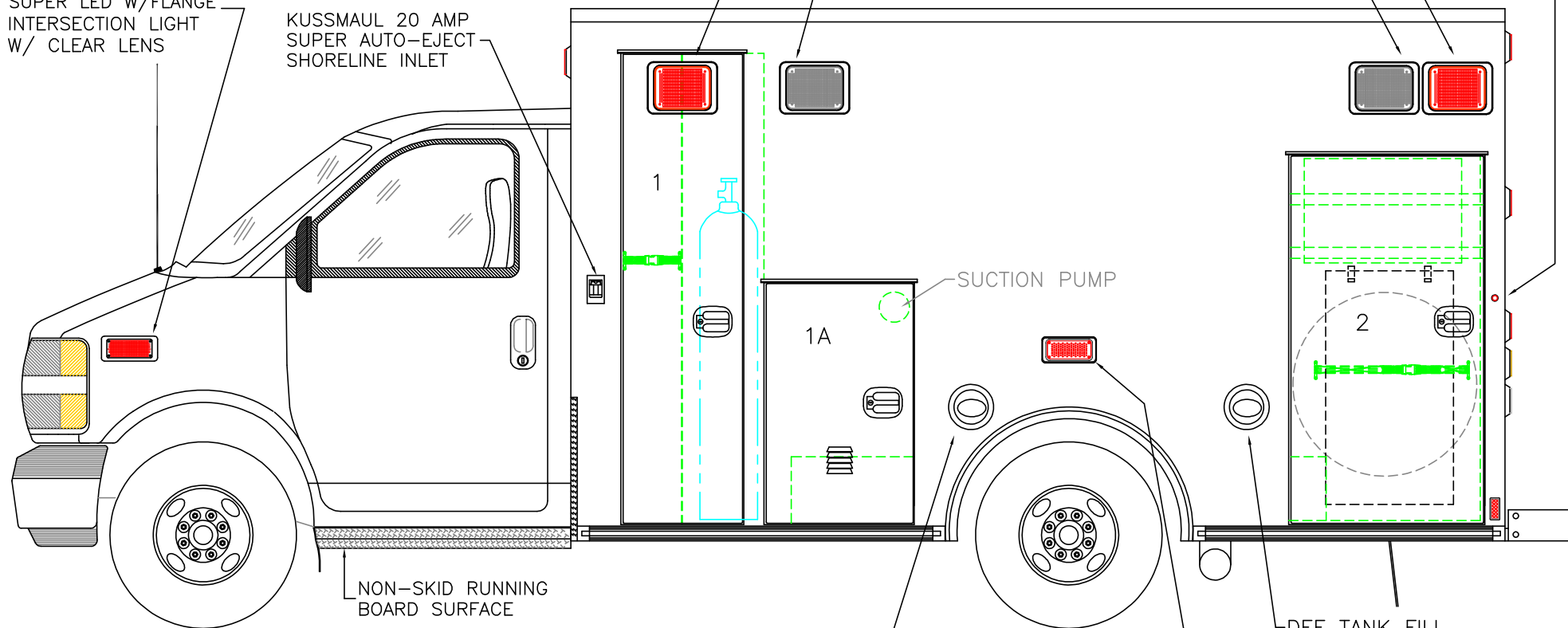
TECNIQ S330 RED MINI-LED MARKER
LIGHT TO ALSO FLASH WITH TURN SIGNAL

WHELEN 700 RED
SUPER LED W/FLANGE
INTERSECTION LIGHT
W/ CLEAR LENS

KUSSMAUL 20 AMP
SUPER AUTO-EJECT
SHORELINE INLET

WHELEN 900 RED SUPER LED WARNING LIGHTS
WITH CLEAR LENSES

WHELEN 900 CLEAR HALOGEN SCENE LIGHTS



COMPARTMENT

O.S.S. #1

CLEAR OPENING: 73.75h x 16.00w

INSIDE DIMS: 75.00h x 22.75w x 18.50d

OXYGEN STORAGE ON RIGHT SIDE OF VERTICAL DIVIDER
DIVIDER DEPTH = 8" TO ALLOW ALTERNATE STAIR

CHAIR STORAGE OUTBOARD OF OXYGEN

(1) STRAP ON LEFT SIDE OF DIVIDER

O.S.S. #1A

CLEAR OPENING: 37.50h x 20.75w

INSIDE DIM'S.: 42.50h x 24.00w x 18.50d

O.S.S. #2

CLEAR OPENING: 57.75h x 28.00w

INSIDE DIM'S.: 59.50h x 31.25w x 18.50d

INSIDE/OUTSIDE ACCESS

(2) ADJUSTABLE SHELVES: UPPER=FULL DEPTH; LOWER=REDUCED
DEPTH DUE TO STAIR CHAIR ON INSIDE OF DOOR

MOUNTING HOOKS AND STRAP ON INSIDE OF DOOR FOR
STRYKER 6252 OR FERNO EZ-GLIDE STAIR CHAIR

OPTIONAL SPARE TIRE STORAGE (MOUNT NOT INCLUDED AS STANDARD)

NOTE: STAIR CHAIR AND SPARE STORAGE WILL NOT FIT AT SAME TIME

NOTE:

THIS DRAWING REPRESENTS
THE STANDARD LAYOUT
FOR THIS MODEL.

THIS DRAWING IS FOR REPRESENTATIONAL PURPOSES ONLY. DETAILS ARE CONCEPTUAL AND ARE SUBJECT TO CHANGE DURING DESIGN AND CONSTRUCTION
DIMENSIONS ARE APPROXIMATE UNLESS NOTED OTHERWISE TO MEET A SPECIFIC CUSTOMER NEED.



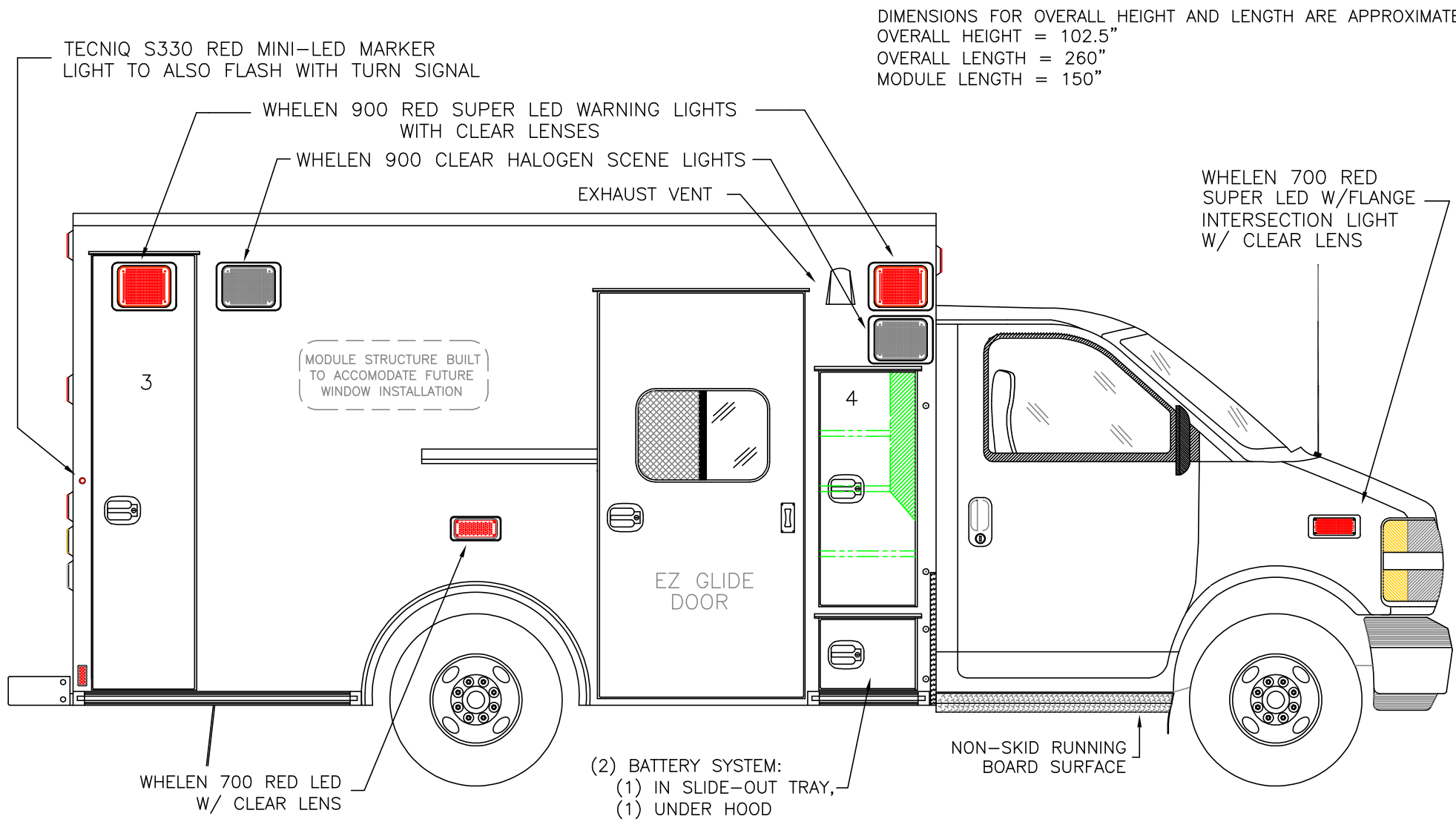
2013 STREETSIDE EXTERIOR VIEW
SIGNATURE SERIES / CHEVY G3500 CHASSIS

1:24

DATE:
29 OCT 12
DWG. AAB REV. NR

DRAWING NO.

SS-G3500-3



DIMENSIONS FOR OVERALL HEIGHT AND LENGTH ARE APPROXIMATE
 OVERALL HEIGHT = 102.5"
 OVERALL LENGTH = 260"
 MODULE LENGTH = 150"

NOTE:
 THIS DRAWING REPRESENTS
 THE STANDARD LAYOUT
 FOR THIS MODEL.

O.S.S #3
 CLEAR OPENING: 73.75h x 15.00w
 INSIDE DIM'S.: 75.00h x 18.00w x 18.50d
 BACKBOARD/SCOOP STORAGE

O.S.S #4
 CLEAR OPENING: 39.00h x 15.50w
 INSIDE DIM'S.: SEE PARTITION INTERIOR VIEW
 INSIDE/OUTSIDE ACCESS

THIS DRAWING IS FOR REPRESENTATIONAL PURPOSES ONLY. DETAILS ARE CONCEPTUAL AND ARE SUBJECT TO CHANGE DURING DESIGN AND CONSTRUCTION
 DIMENSIONS ARE APPROXIMATE UNLESS NOTED OTHERWISE TO MEET A SPECIFIC CUSTOMER NEED.

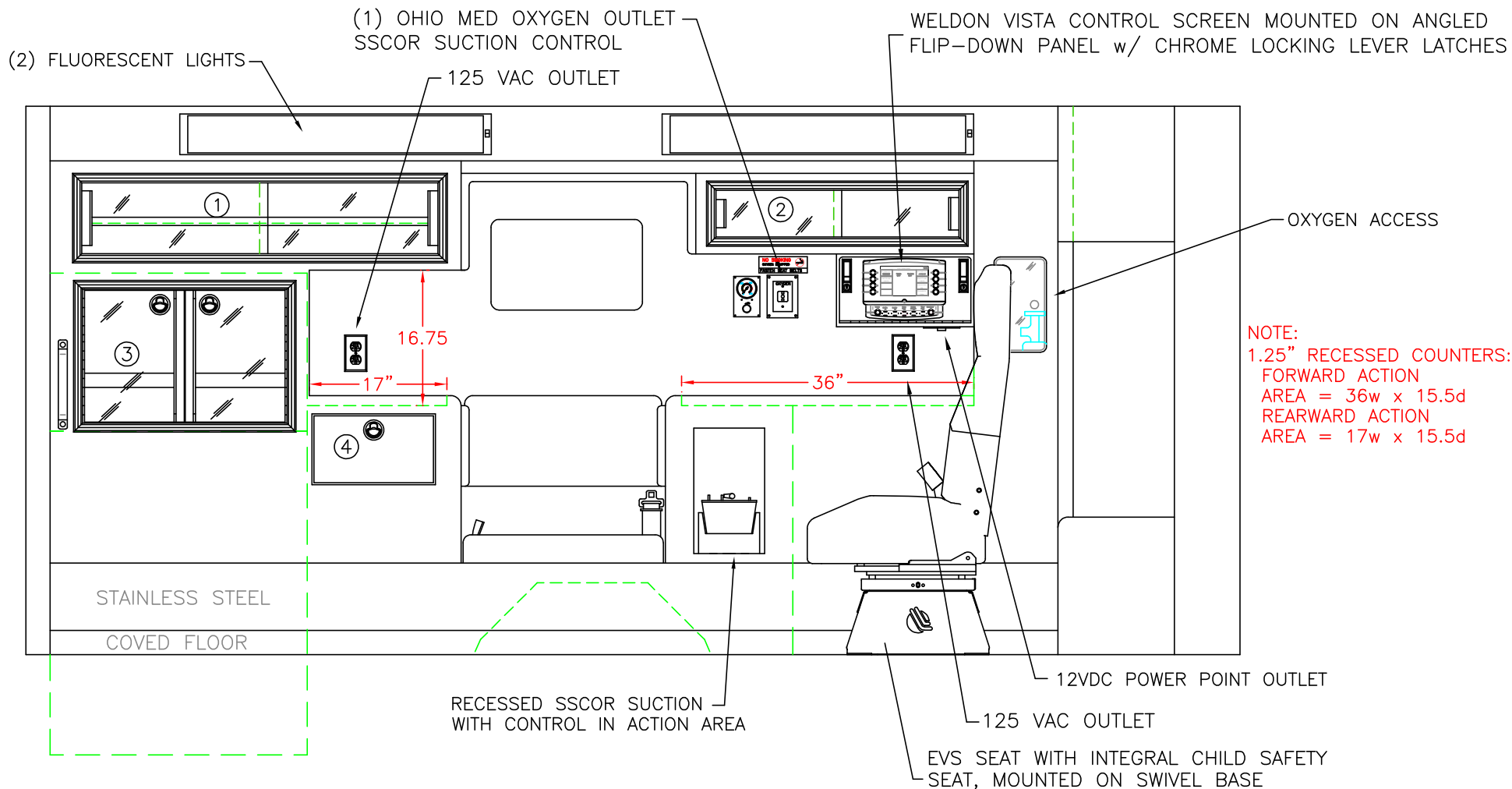


2013 CURB EXTERIOR VIEW
 SIGNATURE SERIES / CHEVY G3500 CHASSIS

1:24

DATE:
29 OCT 12
 DWG. AAB
 REV. NR

DRAWING NO.
 SS-G3500-4



COMPARTMENT:

- #1 DOOR OPENING: 8.75h x 44.00w
INSIDE DIMS: 10.50h x 45.50w x 16.25d
(1) ADJUSTABLE SHELF
- #2 DOOR OPENING: 5.75h x 30.00w
INSIDE DIMS: 8.50h x 31.75w x 15.00d

- #3 DOOR OPENING: 16.50h x 24.50w
INSIDE/OUTSIDE COMPARTMENT ACCESS
HINGED ACRYLIC DOORS
STAINLESS STEEL FLUSH PULL LATCHES

- #4 PULL-OUT DRAWER
INSIDE DIMS: 7.00h x 13.75w x 15.75d
STAINLESS STEEL FLUSH PULL LATCH

CABINETS TO BE ALUMINUM

NOTE:
THIS DRAWING REPRESENTS
THE STANDARD LAYOUT
FOR THIS MODEL.

THIS DRAWING IS FOR REPRESENTATIONAL PURPOSES ONLY. DETAILS ARE CONCEPTUAL AND ARE SUBJECT TO CHANGE DURING DESIGN AND CONSTRUCTION
DIMENSIONS ARE APPROXIMATE UNLESS NOTED OTHERWISE TO MEET A SPECIFIC CUSTOMER NEED.

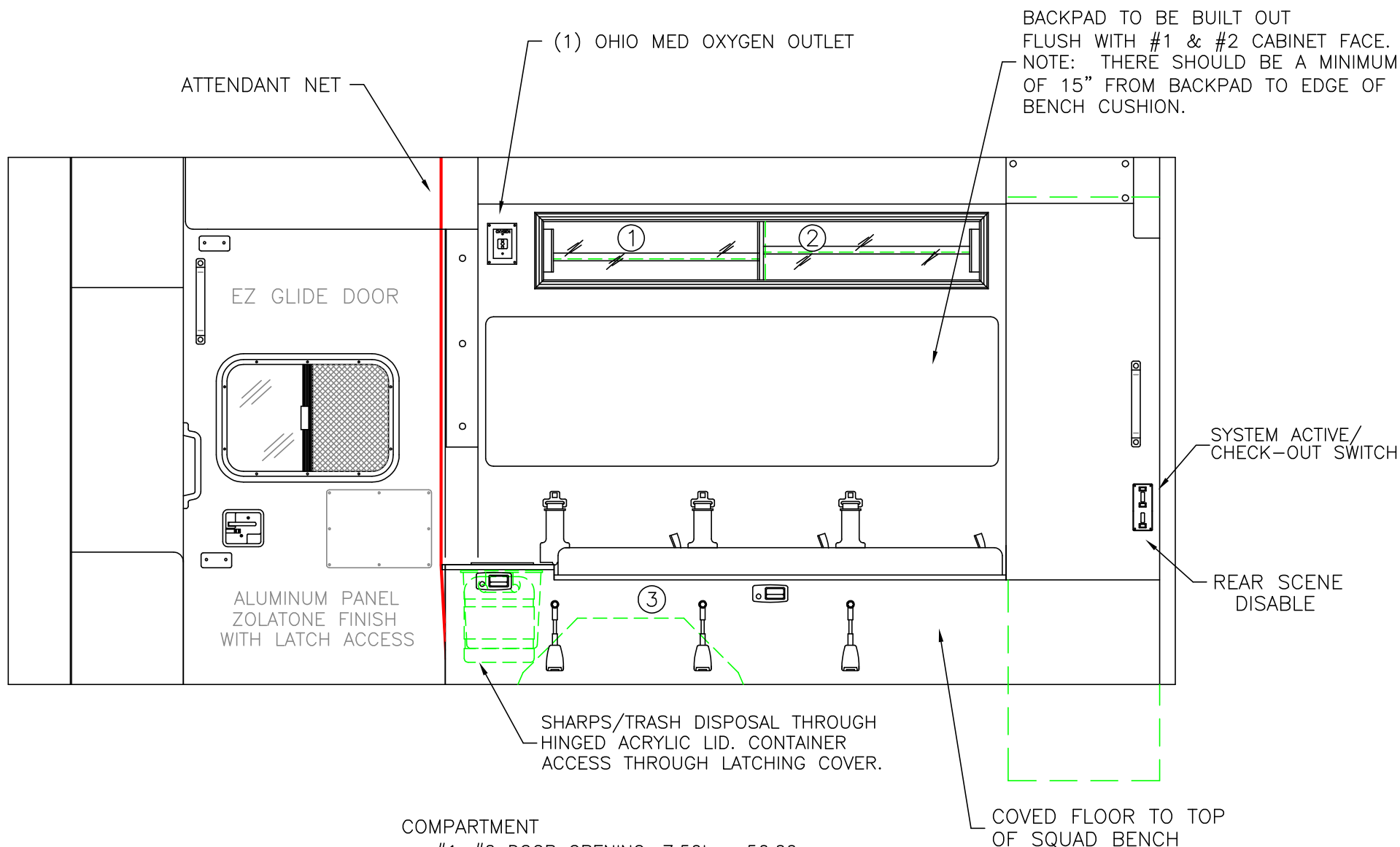


2013 STREETSIDE INTERIOR
SIGNATURE SERIES

1:18

DATE:
29 OCT 12
DWG. AAB
REV. NR

DRAWING NO.
SS-G3500-5



COMPARTMENT

#1-#2 DOOR OPENING: 7.50h x 56.00w
 INSIDE DIMS: 9.25h x 58.00w x 5.50d
 PERMANENT DIVIDER (CENTERED)
 (1) ADJUSTABLE SHELF ON EACH SIDE OF DIVIDER

#3 INSIDE DIMS: 14.25h x 72.00w x 18.50d

NOTE:
 THIS DRAWING REPRESENTS
 THE STANDARD LAYOUT
 FOR THIS MODEL.

CABINETS TO BE ALUMINUM

THIS DRAWING IS FOR REPRESENTATIONAL PURPOSES ONLY. DETAILS ARE CONCEPTUAL AND ARE SUBJECT TO CHANGE DURING DESIGN AND CONSTRUCTION
 DIMENSIONS ARE APPROXIMATE UNLESS NOTED OTHERWISE TO MEET A SPECIFIC CUSTOMER NEED.

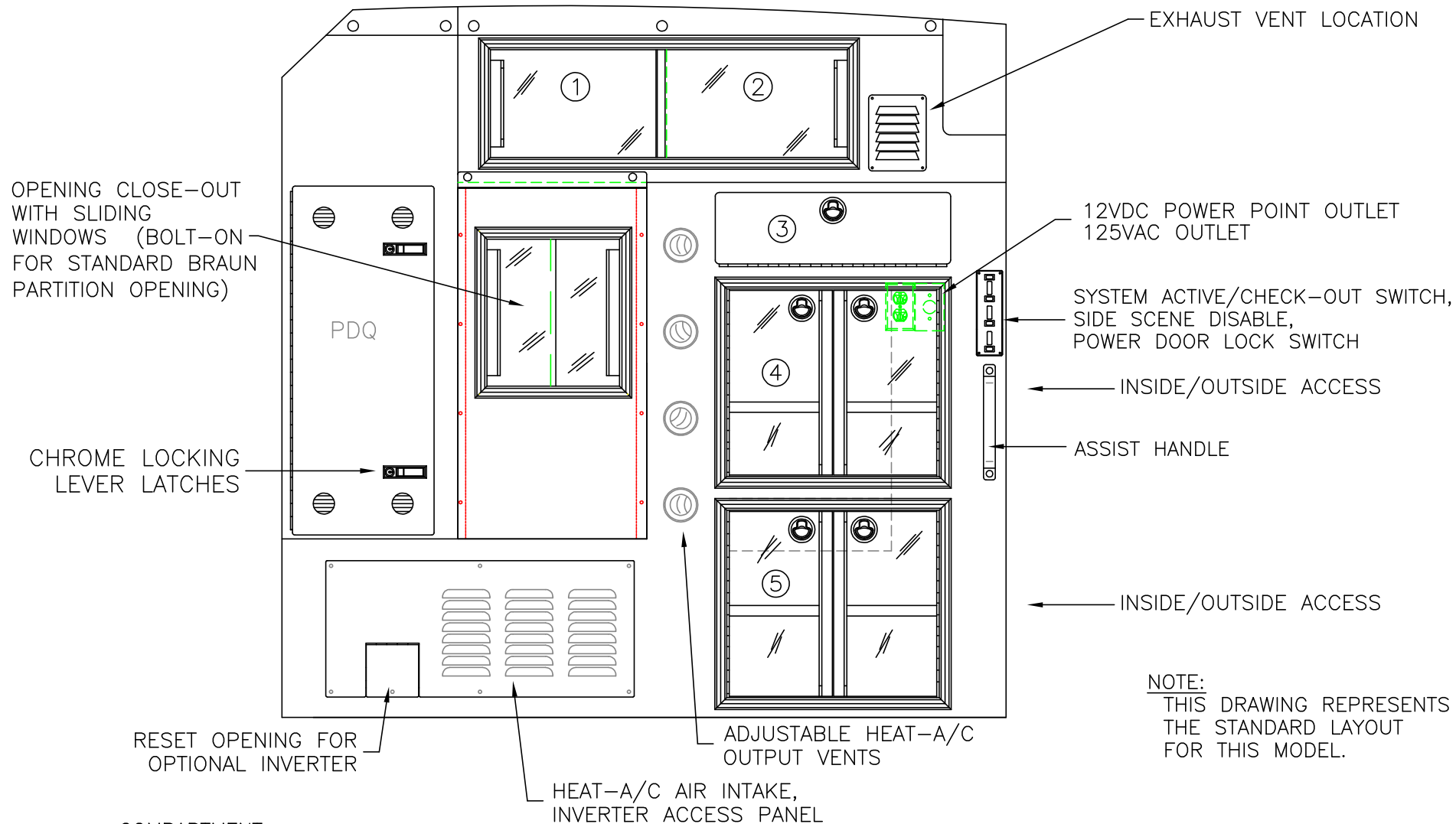


2013 CURBSIDE INTERIOR VIEW
 SIGNATURE SERIES

1:18

DATE:
29 OCT 12
 DWG. AAB
 REV. NR

DRAWING NO.
 SS-G3500-6



COMPARTMENT

#1/#2 DOOR OPENING: 10.25h x 34.00w
INSIDE DIMS: 13.25h x 35.75w x 13.25d
PERMANENT DIVIDER(CENTERED)

#3 DROP-DOWN HINGED ALUMINUM DOOR
WITH STAINLESS STEEL FLUSH PULL LATCH
OPENING DIMS: 6.50h x 22.00w
INSIDE DIMS: 7.50h x 22.00w x 14.25d

#4, #5 DOOR OPENINGS: 17.75h x 20.00w
INSIDE DIMS: 19.25h x 28.00w x 13.25d
RECESSED .375" ACRYLIC DOORS WITH FULL LENGTH HANDLES
(2) STAINLESS STEEL FLUSH PULL LATCHES PER CABINET
(1) ADJUSTABLE SHELF PER COMPARTMENT

CABINETS TO BE ALUMINUM

THIS DRAWING IS FOR REPRESENTATIONAL PURPOSES ONLY. DETAILS ARE CONCEPTUAL AND ARE SUBJECT TO CHANGE DURING DESIGN AND CONSTRUCTION
DIMENSIONS ARE APPROXIMATE UNLESS NOTED OTHERWISE TO MEET A SPECIFIC CUSTOMER NEED.



2013 PARTITION INTERIOR VIEW
SIGNATURE SERIES

1:14

DATE:
26 OCT 12
DWG. AAB
REV. NR

DRAWING NO.
SS-G3500-7

ATTENDANT NET

RECESSED
SHARPS/WASTE

ALUMINUM PANEL
ZOLATONE FINISH
WITH LATCH ACCESS

ALUMINUM PANEL
ZOLATONE FINISH
WITH LATCH ACCESS

RED/WHITE REFLECTIVE STRIP
ON INSIDE OF EACH DOOR

NOTE:
THIS DRAWING REPRESENTS
THE STANDARD LAYOUT
FOR THIS MODEL.

THIS DRAWING IS FOR REPRESENTATIONAL PURPOSES ONLY. DETAILS ARE CONCEPTUAL AND ARE SUBJECT TO CHANGE DURING DESIGN AND CONSTRUCTION
DIMENSIONS ARE APPROXIMATE UNLESS NOTED OTHERWISE TO MEET A SPECIFIC CUSTOMER NEED.

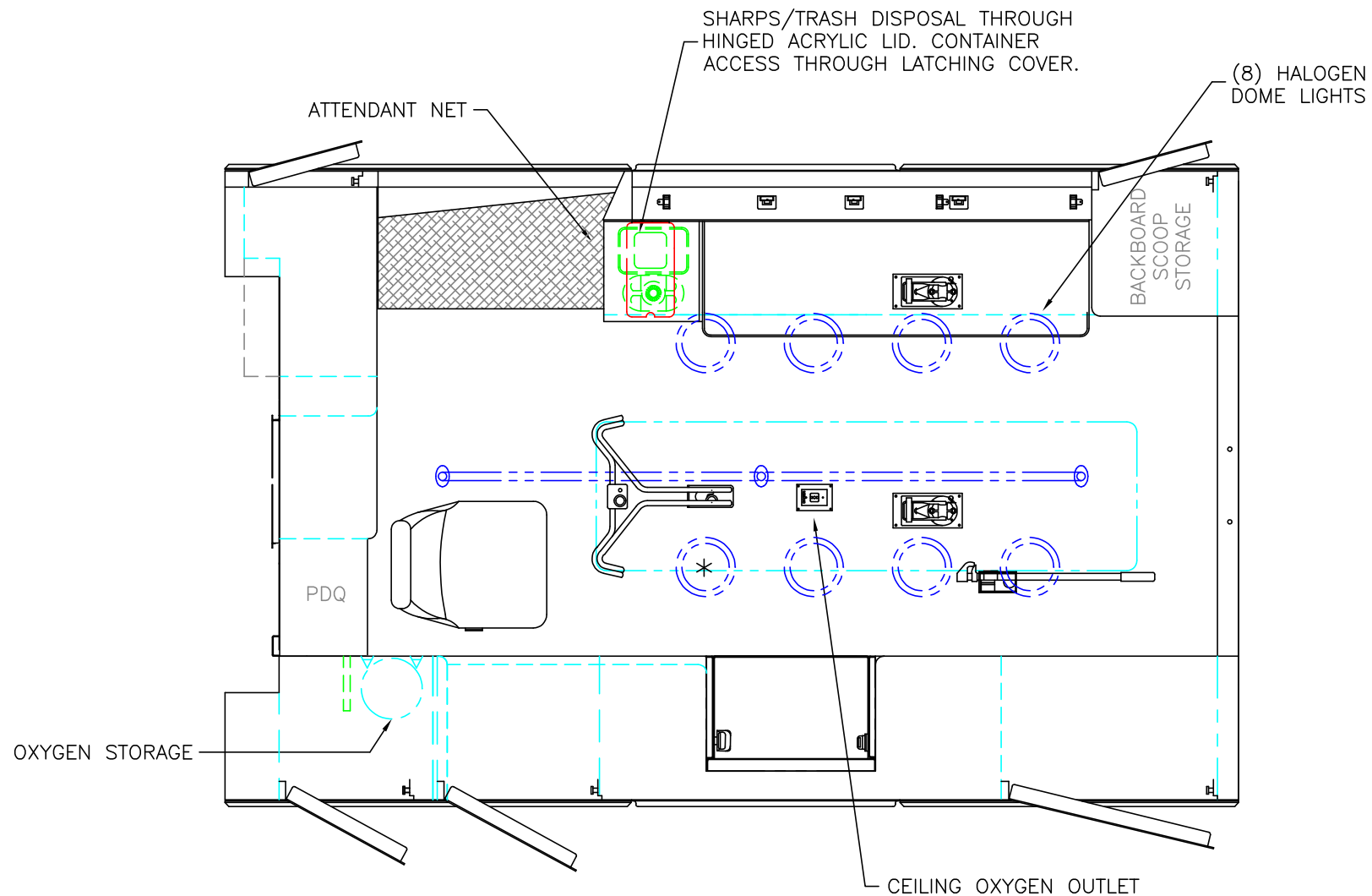


2013 REAR INTERIOR VIEW
SIGNATURE SERIES

1:13

DATE:	26 OCT 12
DWG.	AAB
REV.	NR

DRAWING NO.	SS-G3500-8
-------------	------------



* (1) ANTENNA BASE LOCATED OUTBOARD OF DOME LIGHT WITH COAX SERVICE LOOP

STRYKER CENTER MOUNT COT HARDWARE

 = (2) RECESSED CAST PRODUCTS CEILING IV HANGERS

HEAD ROOM = 68"
OVERALL WIDTH WITH RUB
RAILS & FENDERETTES = 95"
MODULE LENGTH = 150"

NOTE:
THIS DRAWING REPRESENTS
THE STANDARD LAYOUT
FOR THIS MODEL.

THIS DRAWING IS FOR REPRESENTATIONAL PURPOSES ONLY. DETAILS ARE CONCEPTUAL AND ARE SUBJECT TO CHANGE DURING DESIGN AND CONSTRUCTION
DIMENSIONS ARE APPROXIMATE UNLESS NOTED OTHERWISE TO MEET A SPECIFIC CUSTOMER NEED.



2013 FLOOR VIEW
SIGNATURE SERIES

1:24

DATE: 26 OCT 12	
DWG. AAB	REV. NR

DRAWING NO. SS-G3500-9
